

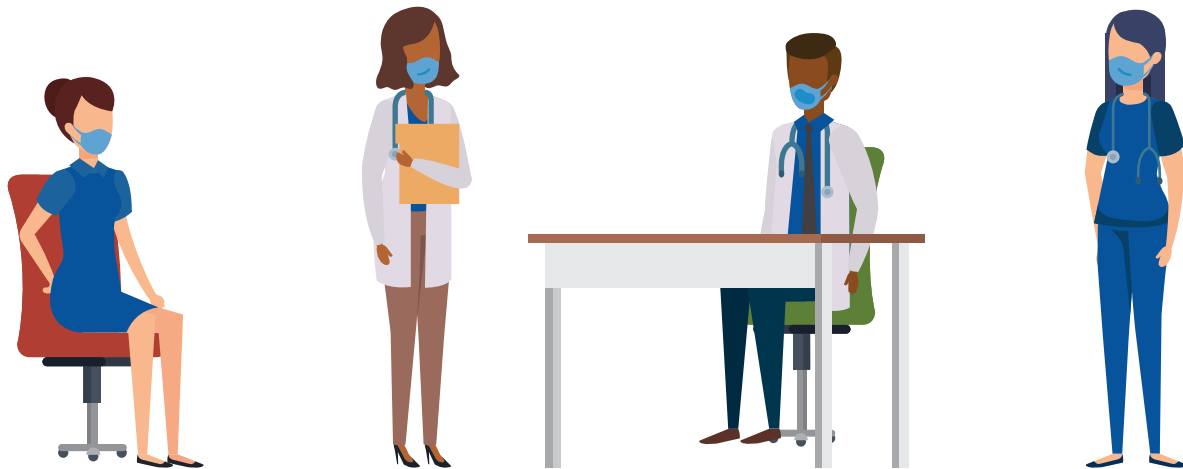
Always Wear Your Face Mask

Wear your mask in common areas at all times when not actively eating, drinking or using the restroom. As soon as you are done with these activities, place your mask back on your face.

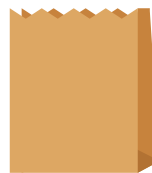


Limit the number of unmasked individuals who are in close proximity with one another while eating and drinking, including in:

- breakrooms
- workrooms
- workstations
- cafeteria
- courtyards
- nurses stations



Wash your hands before and after you touch your mask.



Safely store your mask in a paper bag when necessary to remove it.

Thank you for setting a good example by wearing your face mask as appropriate and for helping keep others accountable for doing the same.



DukeHealth