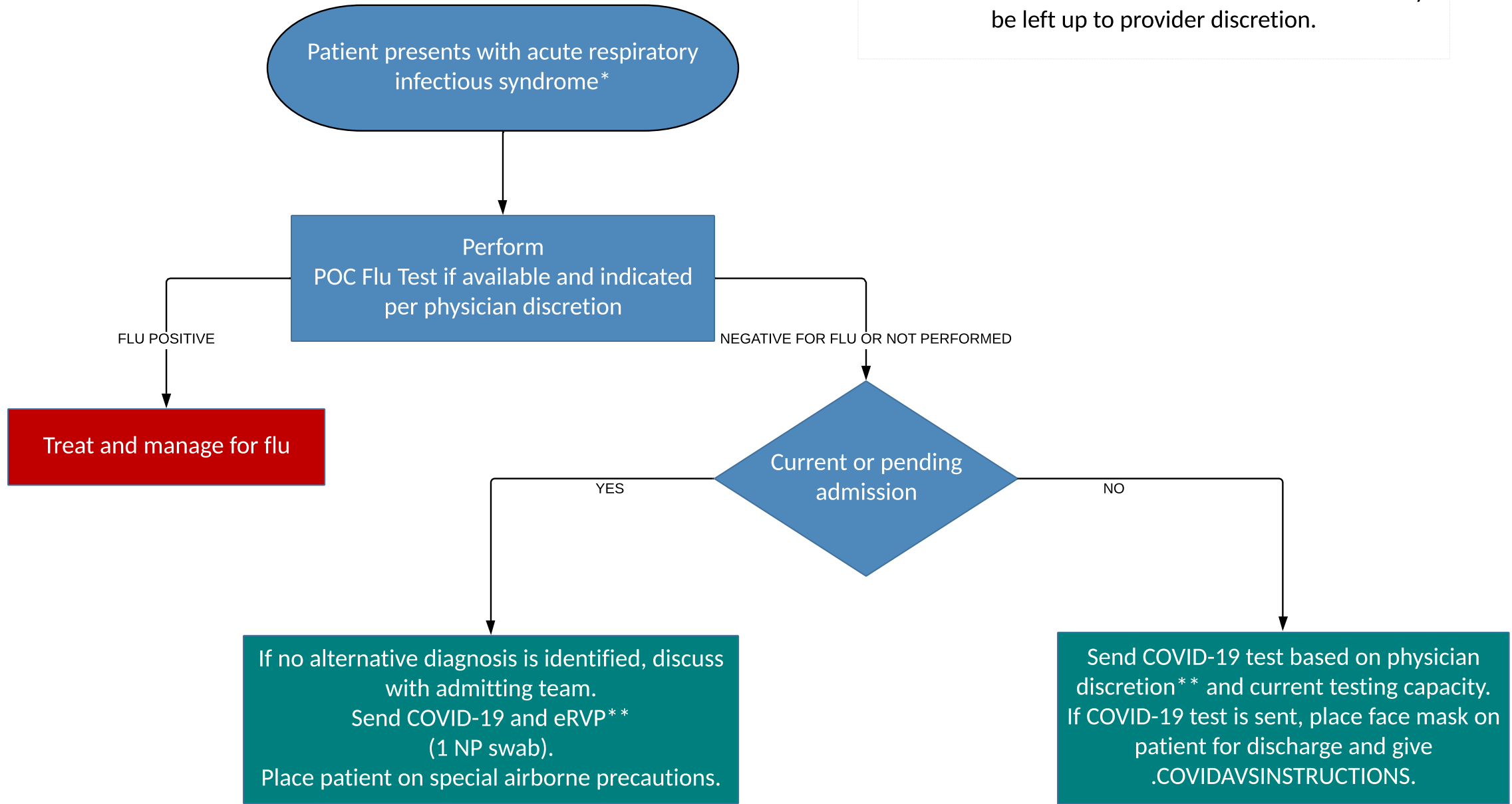


ED & INPATIENT HOSPITAL DAY ≤ 3 COVID-19 Decision Tree

The decision to send COVID-19 tests should ultimately be left up to provider discretion.



* Acute respiratory infectious syndrome includes symptoms such as fevers, chills, cough, congestion, rhinorrhea, headache, myalgias, or sore throat

**Providers can cancel COVID-19 tests if alternate diagnosis is made

POC, Point of Care; AVS, After-Visit Summary

For more information on isolation and PPE guidance, please see Clinical Guidance and Forms folder:

Guidance for HCW PPE During COVID-19 Response

For more information on how to collect COVID-19 samples, please see **Testing Guidance** folder